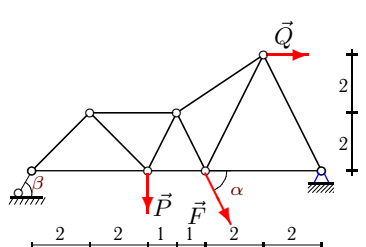
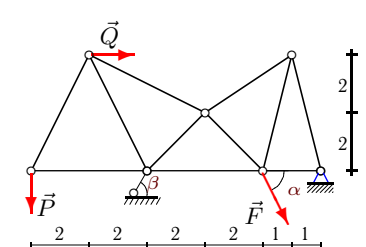
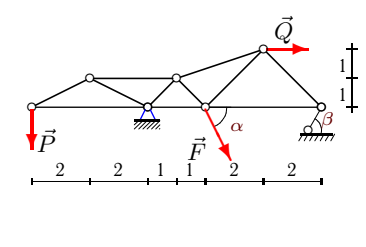
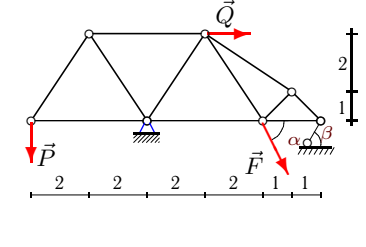
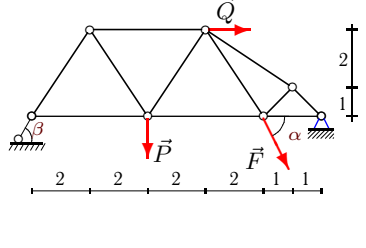
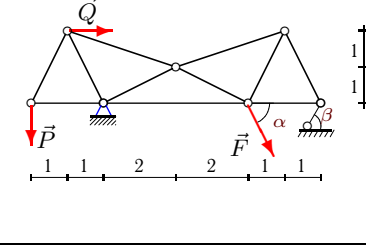
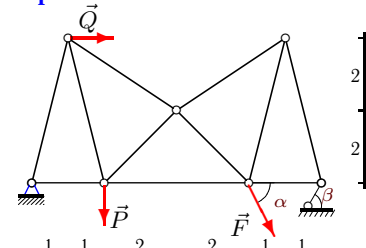
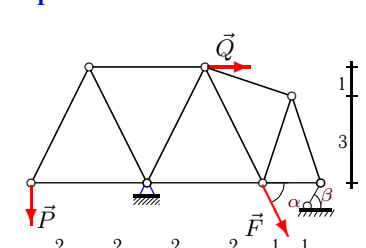
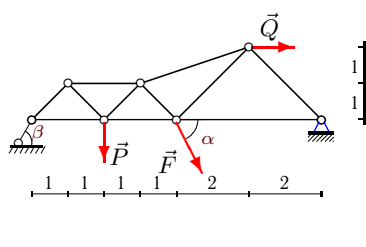
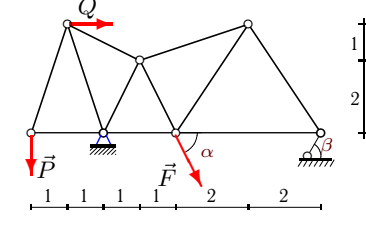
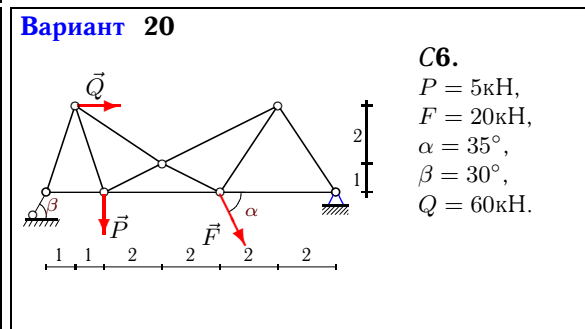
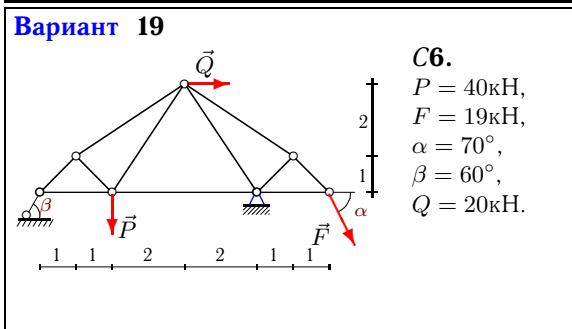
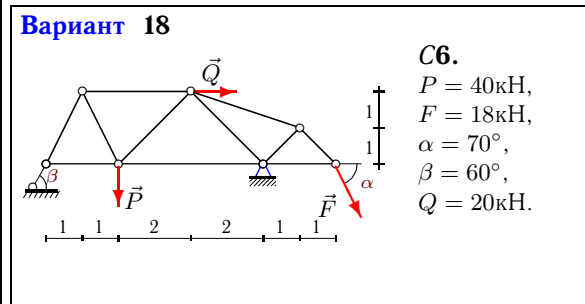
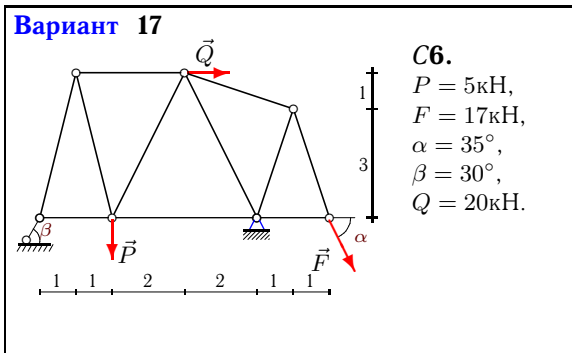
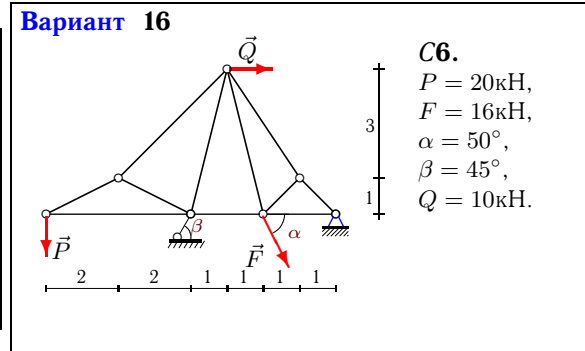
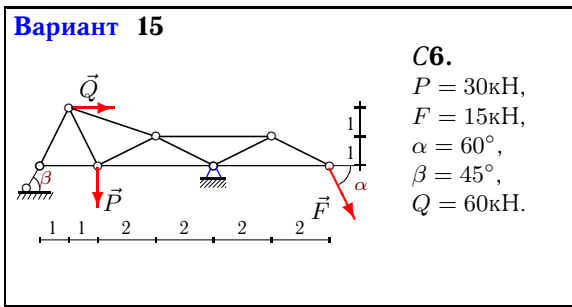
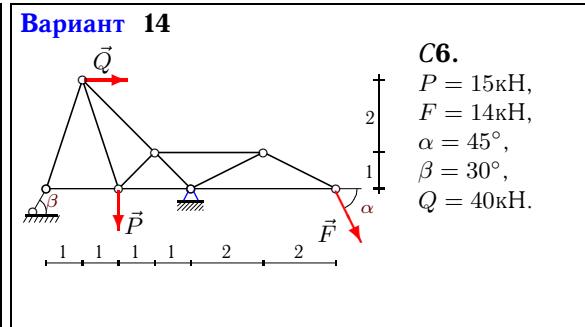
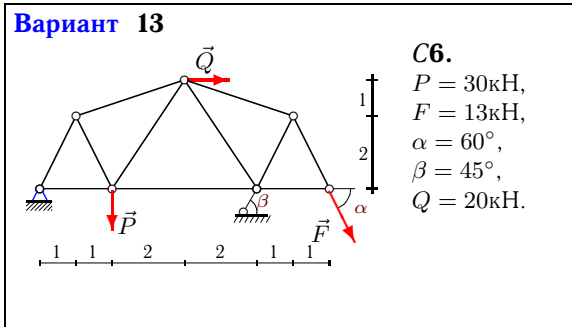
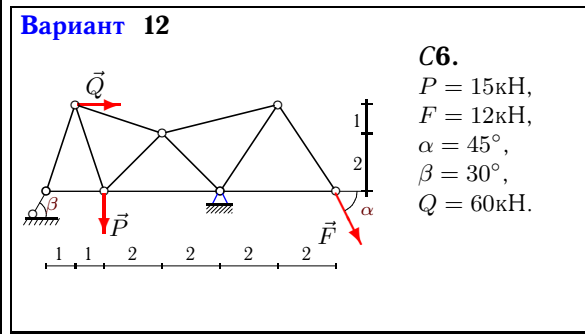
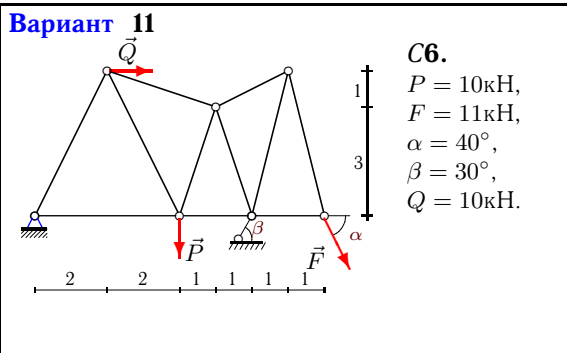


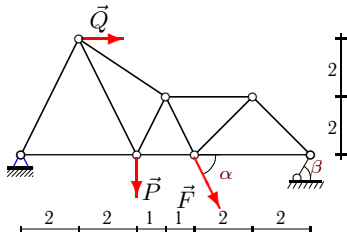
Расчет фермы

Кирсанов М.Н. Решебник. Теоретическая механика с. 45.

<p>Вариант 1</p>  <p>С6. $P = 45\text{кН}$, $F = 1\text{кН}$, $\alpha = 75^\circ$, $\beta = 60^\circ$, $Q = 50\text{кН}$.</p>	<p>Вариант 2</p>  <p>С6. $P = 15\text{кН}$, $F = 2\text{кН}$, $\alpha = 45^\circ$, $\beta = 30^\circ$, $Q = 30\text{кН}$.</p>
<p>Вариант 3</p>  <p>С6. $P = 25\text{кН}$, $F = 3\text{кН}$, $\alpha = 55^\circ$, $\beta = 45^\circ$, $Q = 50\text{кН}$.</p>	<p>Вариант 4</p>  <p>С6. $P = 15\text{кН}$, $F = 4\text{кН}$, $\alpha = 45^\circ$, $\beta = 30^\circ$, $Q = 30\text{кН}$.</p>
<p>Вариант 5</p>  <p>С6. $P = 35\text{кН}$, $F = 5\text{кН}$, $\alpha = 65^\circ$, $\beta = 45^\circ$, $Q = 30\text{кН}$.</p>	<p>Вариант 6</p>  <p>С6. $P = 35\text{кН}$, $F = 6\text{кН}$, $\alpha = 65^\circ$, $\beta = 45^\circ$, $Q = 20\text{кН}$.</p>
<p>Вариант 7</p>  <p>С6. $P = 20\text{кН}$, $F = 7\text{кН}$, $\alpha = 50^\circ$, $\beta = 45^\circ$, $Q = 20\text{кН}$.</p>	<p>Вариант 8</p>  <p>С6. $P = 35\text{кН}$, $F = 8\text{кН}$, $\alpha = 65^\circ$, $\beta = 45^\circ$, $Q = 30\text{кН}$.</p>
<p>Вариант 9</p>  <p>С6. $P = 35\text{кН}$, $F = 9\text{кН}$, $\alpha = 65^\circ$, $\beta = 45^\circ$, $Q = 40\text{кН}$.</p>	<p>Вариант 10</p>  <p>С6. $P = 10\text{кН}$, $F = 10\text{кН}$, $\alpha = 40^\circ$, $\beta = 30^\circ$, $Q = 40\text{кН}$.</p>

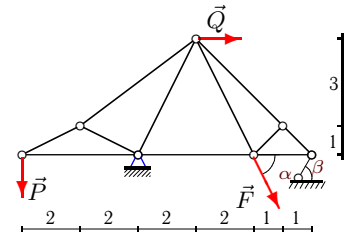


Вариант 21



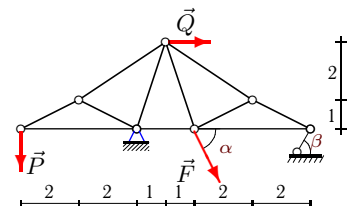
C6.
 $P = 45 \text{ кН}$,
 $F = 21 \text{ кН}$,
 $\alpha = 75^\circ$,
 $\beta = 60^\circ$,
 $Q = 50 \text{ кН}$.

Вариант 22



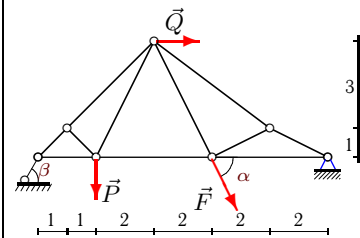
C6.
 $P = 30 \text{ кН}$,
 $F = 22 \text{ кН}$,
 $\alpha = 60^\circ$,
 $\beta = 45^\circ$,
 $Q = 30 \text{ кН}$.

Вариант 23



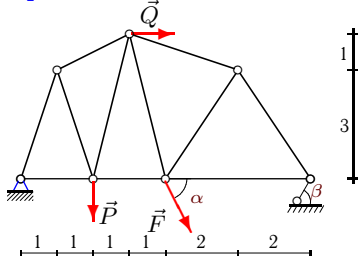
C6.
 $P = 10 \text{ кН}$,
 $F = 23 \text{ кН}$,
 $\alpha = 40^\circ$,
 $\beta = 30^\circ$,
 $Q = 50 \text{ кН}$.

Вариант 24



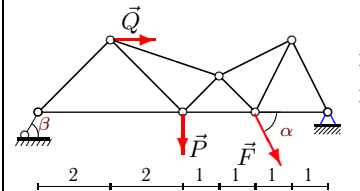
C6.
 $P = 45 \text{ кН}$,
 $F = 24 \text{ кН}$,
 $\alpha = 75^\circ$,
 $\beta = 60^\circ$,
 $Q = 60 \text{ кН}$.

Вариант 25



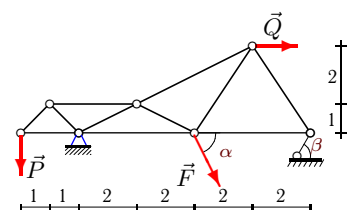
C6.
 $P = 5 \text{ кН}$,
 $F = 25 \text{ кН}$,
 $\alpha = 35^\circ$,
 $\beta = 30^\circ$,
 $Q = 40 \text{ кН}$.

Вариант 26



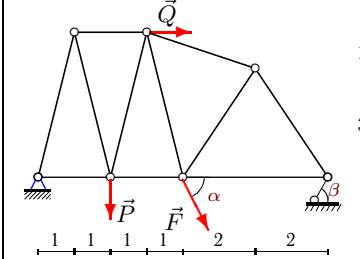
C6.
 $P = 35 \text{ кН}$,
 $F = 26 \text{ кН}$,
 $\alpha = 65^\circ$,
 $\beta = 45^\circ$,
 $Q = 10 \text{ кН}$.

Вариант 27



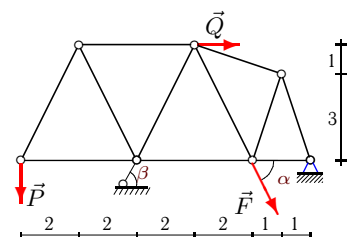
C6.
 $P = 35 \text{ кН}$,
 $F = 27 \text{ кН}$,
 $\alpha = 65^\circ$,
 $\beta = 45^\circ$,
 $Q = 60 \text{ кН}$.

Вариант 28



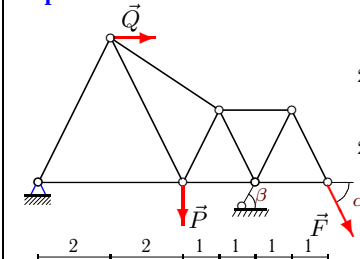
C6.
 $P = 30 \text{ кН}$,
 $F = 28 \text{ кН}$,
 $\alpha = 60^\circ$,
 $\beta = 45^\circ$,
 $Q = 40 \text{ кН}$.

Вариант 29



C6.
 $P = 35 \text{ кН}$,
 $F = 29 \text{ кН}$,
 $\alpha = 65^\circ$,
 $\beta = 45^\circ$,
 $Q = 30 \text{ кН}$.

Вариант 30



C6.
 $P = 20 \text{ кН}$,
 $F = 30 \text{ кН}$,
 $\alpha = 50^\circ$,
 $\beta = 45^\circ$,
 $Q = 10 \text{ кН}$.

Ответы

	X_A	Y_A	R_B	U_1	U_2	U_3	O_1	O_2	O_3	O_4	D_1	D_2	D_3	D_4
1	-54.523	38.580	8.529	3.122	-8.299	-35.234	-10.446	-14.773	20.588	-43.133	10.446	42.053	-29.285	30.365
2	-40.891	10.943	10.943	-7.500	-19.005	-38.155	16.771	-22.361	-7.891	-11.280	-5.590	-0.667	-19.666	15.791
3	-52.540	26.638	1.158	-50.000	-45.822	1.638	55.902	100.000	76.467	-1.158	-55.902	-2.317	36.514	-33.038
4	-44.755	10.943	13.771	-10.000	22.050	18.812	18.028	20.000	-9.931	-9.738	-18.028	4.876	1.744	1.948
5	-45.019	26.625	18.252	-4.302	-10.427	-18.394	-15.511	-17.208	-38.399	-37.654	15.511	26.553	-0.954	7.531
6	-21.161	41.813	-1.944	-17.500	-15.214	-2.062	39.131	18.974	1.739	1.537	-45.839	-1.817	16.463	-2.152
7	-43.521	6.341	26.901	45.106	56.202	23.777	-6.536	-33.417	-13.717	-19.607	25.642	-6.897	-30.078	27.450
8	-34.881	40.750	2.122	-17.500	2.756	2.000	39.131	35.000	-0.949	-1.581	-39.131	-6.429	6.764	1.265
9	-64.132	22.828	28.749	0.000	5.657	-41.304	-28.749	-40.657	-8.944	-32.284	28.749	20.749	-24.749	36.284
10	-80.239	-2.381	37.619	-3.333	84.048	45.118	10.541	-44.721	-33.989	-22.606	10.541	-8.518	-25.860	35.524
11	-57.849	-5.690	45.522	55.004	48.366	6.659	6.362	-5.451	4.517	7.288	-4.434	14.722	-14.409	-9.371
12	-24.046	49.142	-51.314	35.887	8.125	2.828	27.045	-50.868	13.994	10.198	-10.089	34.749	-52.697	-14.277
13	-61.511	6.247	49.513	64.635	49.841	0.871	-6.985	-5.644	10.172	12.587	4.989	30.692	-32.413	-8.991
14	6.218	57.299	-64.799	45.318	23.919	-9.899	34.152	-39.033	39.598	22.136	-5.059	28.000	-67.033	-22.136
15	-58.840	51.651	-12.247	4.330	-25.981	-18.481	9.682	-64.940	51.962	29.047	13.277	40.527	-86.447	-29.047
16	-56.413	-3.872	51.093	-40.000	-52.096	-60.285	44.721	37.712	5.584	5.475	14.907	-44.112	11.836	1.095
17	-10.975	28.001	-26.501	19.638	7.200	10.675	13.658	6.625	6.167	10.278	-13.658	20.404	-22.585	-8.223
18	-34.448	42.553	16.584	-1.111	-19.568	-10.758	-16.057	-14.362	26.744	23.921	16.057	36.258	-48.218	-11.960
19	-32.685	47.139	12.373	4.529	-18.566	-11.356	-15.154	-15.454	25.750	25.250	3.031	45.498	-52.362	-5.050
20	-60.082	25.883	-18.823	13.164	88.655	-42.827	9.920	-83.019	-57.876	-31.107	38.621	-70.748	-90.101	62.215
21	-84.401	15.114	57.932	91.958	149.686	79.137	-16.898	-117.386	-100.341	-70.952	89.697	-39.386	-33.414	70.952
22	-53.702	36.351	17.963	-60.000	26.877	25.403	67.082	60.000	-17.963	-17.963	13.416	-47.350	21.301	0.000
23	-107.909	1.523	46.523	-20.000	91.750	86.813	22.361	20.603	-47.926	-52.014	3.194	-3.111	19.087	-7.431
24	-78.494	46.909	24.564	8.991	-13.509	15.325	-30.084	-30.084	-93.819	-104.892	-0.000	50.312	36.408	-20.978
25	-109.703	-9.080	56.839	106.676	101.643	68.171	9.571	5.801	-32.680	-34.156	-6.837	11.839	-3.861	21.736
26	-41.879	37.673	29.544	0.000	58.564	-23.043	-29.544	-81.875	-56.160	-42.120	66.160	-16.662	-55.472	70.199
27	-97.396	33.485	36.749	-35.000	24.366	43.309	49.497	70.000	42.518	-31.230	-49.497	3.387	39.131	8.377
28	-93.624	14.624	56.037	97.280	97.093	66.041	-15.074	-7.312	-45.565	-47.623	15.074	15.849	-0.997	30.305
29	-89.350	14.189	66.601	-17.500	-76.047	-84.621	39.131	35.000	-8.974	-14.956	-39.131	-13.522	16.695	11.965
30	-79.925	-7.660	71.618	76.095	60.774	7.793	8.565	-4.218	22.981	25.694	-5.949	28.310	-30.925	-25.694